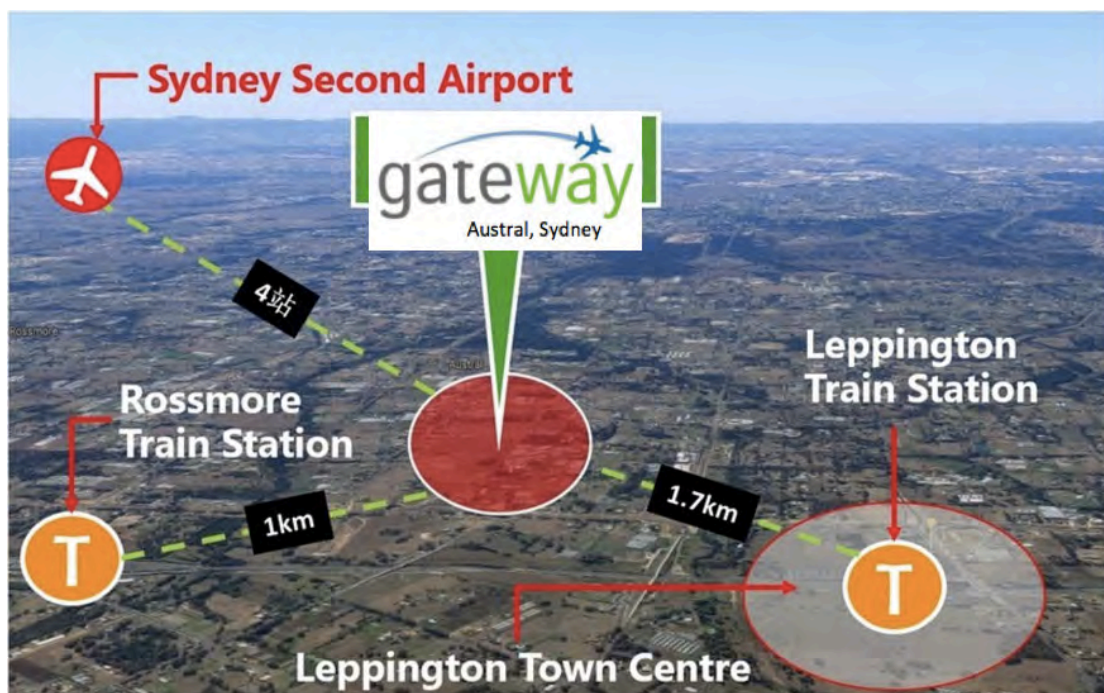




## Gateway Estate

Located in the fastest growing residential corridor in Australia.

Situated in Austral, within the Western Sydney growth corridor and backing on to the spacious surrounds of Western Sydney Parklands, this spectacular land release offers a lifestyle that's close to everything you need.



# gateway

Austral, Sydney



Leppington Town Centre - Source: East Village Leppington

## A Gateway To Amenities At Your Doorstep

Upcoming amenities including kilometres of cycling and walking tracks, beautiful picnic areas, barbecues in the park and exciting playgrounds for the kids.

- Adjoining Western Sydney Parklands
- Cycling and walking tracks
- 1 hour to Sydney CBD
- Close to local schools, shopping, churches, and medical centres
- Short walk to Leppington train station
- 15 mins from planned Western Sydney Airport at Badgerys Creek



Leppington Train Station

## **Gateway - Home & Land in heart of Sydney Growth Centre**

Welcome to the Gateway project - located in the centre of Sydney's South-West Growth Centre, which is expected to accommodate 300,000 new residents and 110,000 new dwellings by 2020.

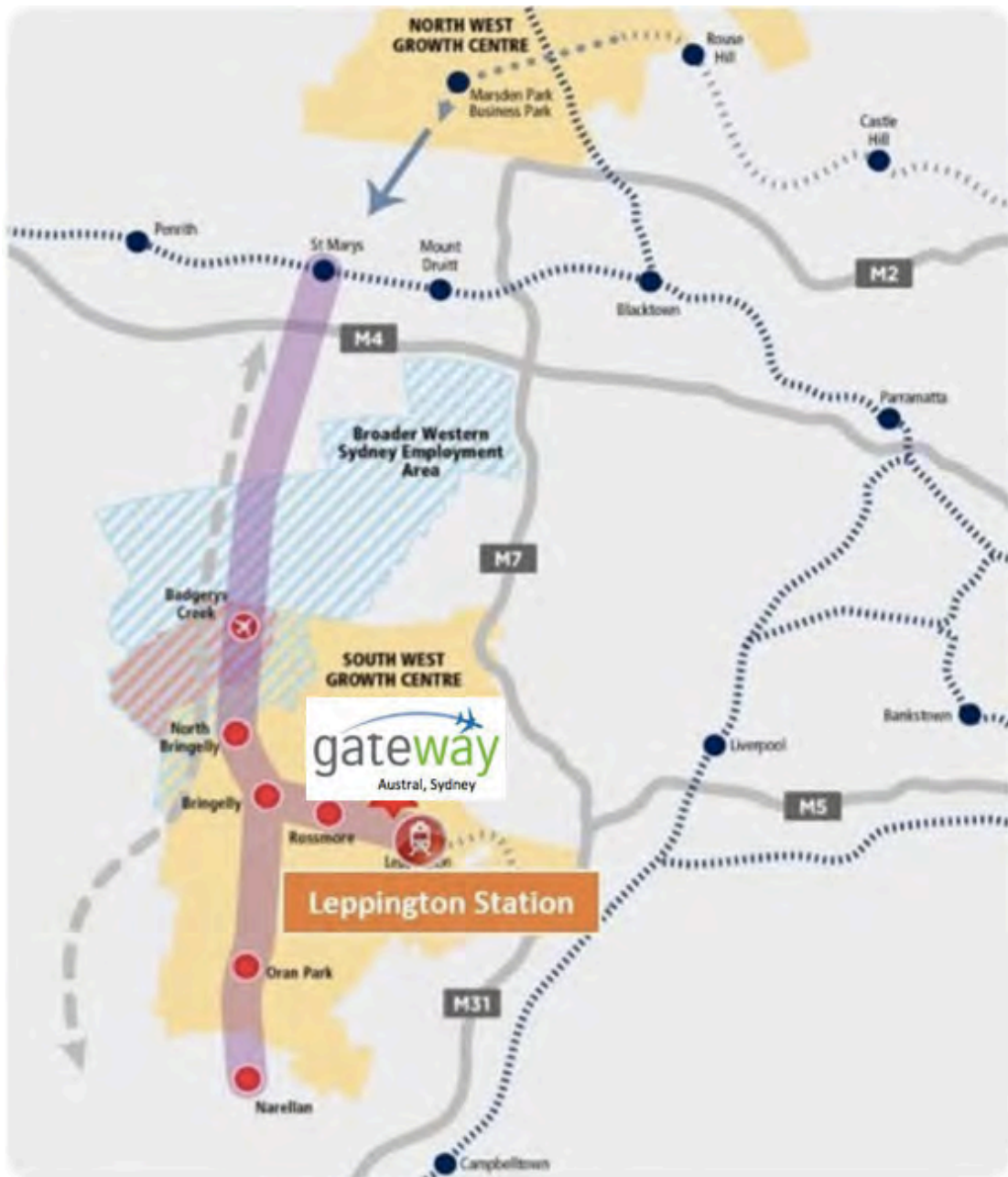
This is a Great Opportunity for people looking for their first home or a sound investment to benefit from securing property now at today's predevelopment low prices.

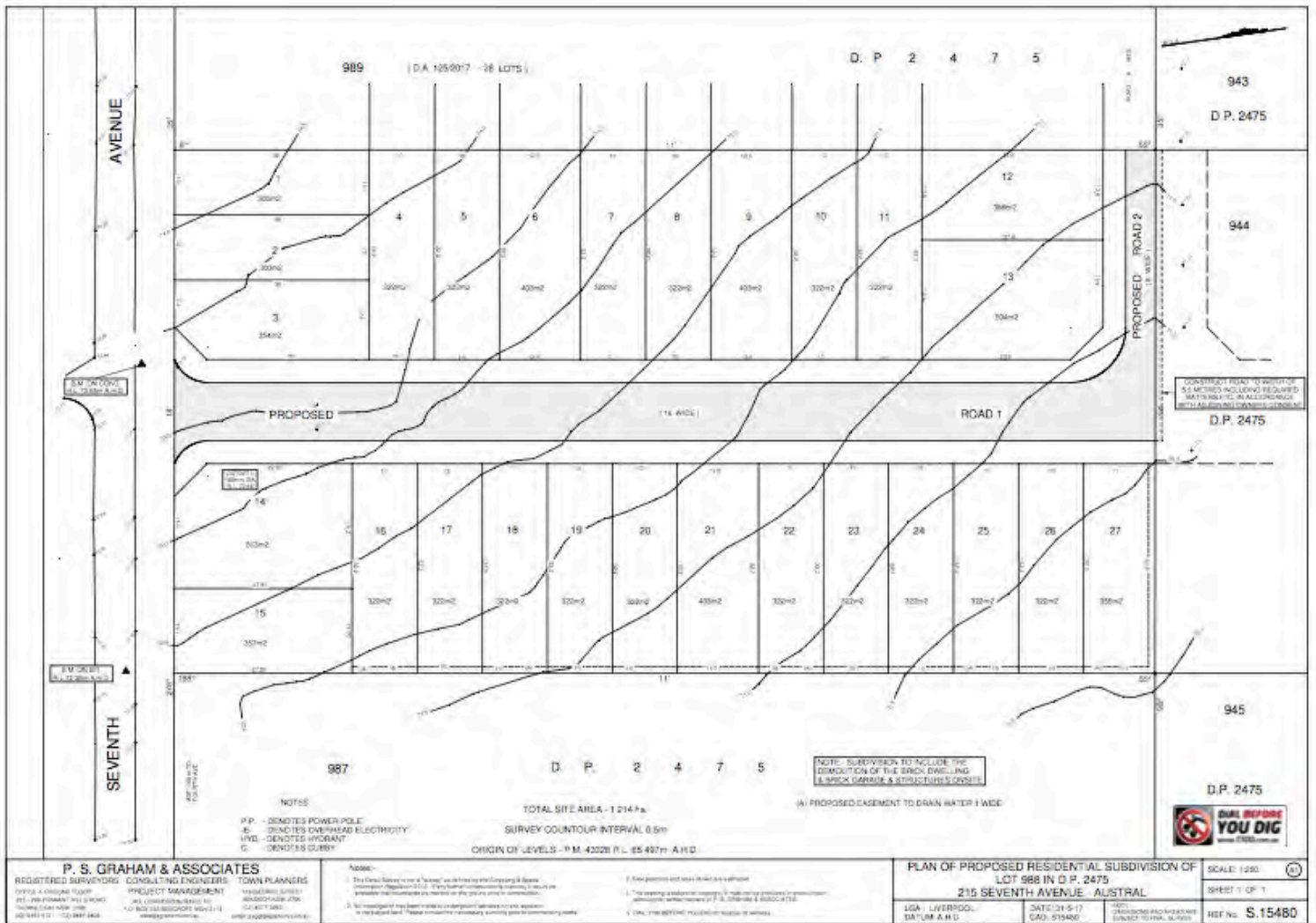
- # Close to Leppington Train Station
- # Minutes to Proposed Leppington Town Centre
- # Close easy drive access to M5 and M7 motorway 7 minutes away
- # Direct links to Sydney CBD and it is planned for only just 4 train stations stops to the Badegrays Creek Airport

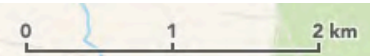




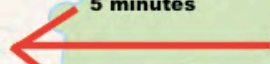
Austral Bowls Club







**BADGERYS CREEK  
PROPOSED AIRPORT**  
5 minutes



Kemps Creek  
Nature Reserve



**Leppington  
Station**  
Leppington

Show ▾

